



Westco Bilanciali

in action

with

Henry Flashman

Weighbridge plays key role at Cornish vehicle recycling site

An 18 metre, 60 tonne Eurodeck weighbridge, supplied by Westco Bilanciali, is helping Cornishman Henry Flashman meet the challenging requirements of the End of Life Vehicle (ELV) Directive.

Weighbridge plays key role at Cornish vehicle recycling site

An 18 metre, 60 tonne Eurodeck weighbridge, supplied by Westco Bilanciai, is helping Cornishman Henry Flashman meet the challenging requirements of the End of Life Vehicle (ELV) Directive.



In the UK around two million vehicles come to the end of their lives each year and it is estimated that approximately 75% of the materials are recycled. Since the introduction of the Directive in 2004, these vehicles can only be disposed of at Authorised Treatment Facilities (ATFs). The Directive sets out clear responsibility guidelines for vehicle manufacturers together with targets for the de-polluting and recycling of end of life vehicles. Article 7 defines that Member States should

encourage the re-use of suitable components and the recovery of unsuitable components with preference for recycling.

Complying with the ELV directive is an onerous task and Henry Flashman has invested considerable time, effort and money to ensure his operation at Gunnislake near Tavistock meets the requirements. However, he is very upbeat about the future and is confident the investment is well worth it. *“Until the Directive was introduced, businesses dismantling vehicles have been exempt from waste management licensing regulations and in the UK disposing of cars has been largely an uncontrolled ‘cottage industry’. We have followed the introduction of the directive very closely and believe we now have one of the most up to date facilities for dealing with ELVs in the southwest of England. Our vehicle crusher can bale 30 cars an hour and we have the capacity to handle over 400 vehicles a week. The weighbridge is an important part of the overall process and allows us to maintain detailed weight records of materials being taken away for recycling.”*



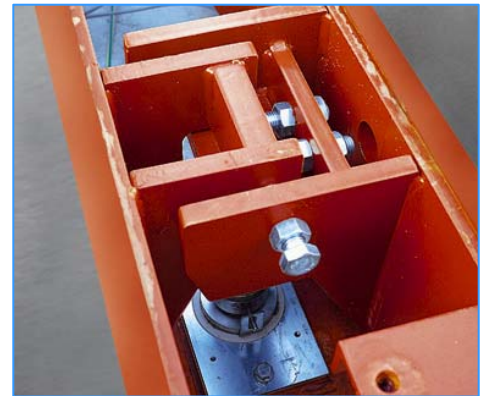
In addition to setting up a de-polluting station, work has involved concreting an area of over two acres to avoid any contaminants getting into the land, and the installation of special holding tanks for petrol, diesel, oil and other liquid waste. Over the years Flashman has designed and built some of his own recycling equipment, including a device for crushing wheels, separating them from the tyres at the same time.

Innovation has always been second nature to Henry ever since he started collecting scrap metals on his way home from school in the 1950s. The business has come a long way since then and the company now employs ten people.



The Eurodeck weighbridge design has a proven track record for reliability in the most arduous of applications. Prior to installation the weighbridge decks are fully assembled and tested in-house. The weighbridge is fitted with Bilanciai's own fully weld-sealed stainless steel rocker pin load cells. To minimise the effects of lightning, the load cell base plates have

insulating discs, which provide electrical isolation. Another important feature is the innovative yet simple restraint system. When vehicles drive onto a weighbridge considerable end-to-end forces can be generated. The Westco restraint system limits both front to back, and side to side movement, without affecting performance.



As Flashman concludes: *"We have been impressed with Westco's approach and support throughout the project. We operate in a tough and demanding environment and expect our equipment to work with the minimum of maintenance. We are confident the weighbridge will meet these demands but have the comfort of knowing that support from Westco is always close at hand."*



Westco Bilanciai Ltd
Broadgauge House,
Broadgauge Business Park,
Bishops Lydeard, Taunton
Somerset TA4 3RU
Tel 01823 433411 Fax: 01823 433334
www.westcoweigh.co.uk sales@westcoweigh.co.uk